



DATE: January 19, 2025

TO: USFS Snoqualmie Ranger District

FROM: White River FPA

SUBJECT: October through December 2024 Report & Hours

Organizational Issues

Nothing new.

Forest Report

After the November election, we noted a much more significant loss of no-shooting signs. Additionally, they were not just taken down and tossed to the side, as is often the case, but gone from the forest. In a single day, we replaced nine; this time of year, we don't usually lose that many in a month. We will monitor this pattern, but this type of lawlessness will likely be a pattern with the incoming administration, which advocates for people to ignore the laws and legal processes.

That being said, we are now low on the brown signs.



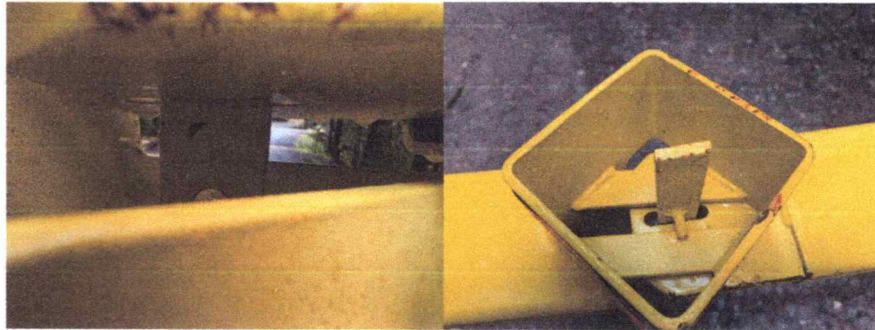
On a more positive note, we strongly applaud the above sign at Pyramid Creek on the 70 Road! We have advocated for this posting for many years, which is a great idea. It will help protect the camping, fishing, and hiking area up a few miles to the gate. Good addition.



A couple of shooting areas, like the one above, just above the bridge and sign, can now be corrected. They are full of trash and damage, but a deep ditch can fix them. Thousands of people camp on the river during the summer months. These couple of locations result in campers hearing hundreds of thousands of rounds of automatic rifle fire right across from where they are camping, destroying the forest experience for 99.9999 percent of the users. Fixing these should be a priority now that it is closed to shooting.



The above photo shows the new gate at Huckleberry Creek, which will be closed in the winter for habitat and elk protection. This gate, along with the gate at the upper 72 Road, is a welcome addition. That being said, it has a flaw: the space where the tongue can be accessed by a simple hacksaw and the fact that the piece is pot metal.



The photos above show these two problems. We suggest stainless steel for the drop pin in the right picture and a barrier welded to the side that will keep a hacksaw from accessing the side of the pin. In its current state, a hacksaw could cut the gate open in a few minutes or less. Stainless would give it a fighting chance, but a barrier would help even more.



There are a couple of cars on the 70, the one above at 28 Mile Creek and the one below just up the 72 above the old closed 72 Pit.

Seeing these gone before they attract more trash from shooters would be nice.



The 70 Pit remains the same, except someone put up some “no Tannerite shooting” signs. A few days ago, we probably saw over 100 exploded containers of Tannerite there. Here is the Trump sign at the 70 Pit. It remains entirely out of compliance with any laws or safe standards of civilized behavior.



Our group is very concerned about the potential shortage of summer interns in the forest and will do what we can to help. The USFS is doing everything possible to protect our National Forests with its limited resources, and we wish to thank them all for their dedication and professionalism. However, outside volunteer groups must pitch in and do more for the next few years.

Finally, a very determined beaver has been doing much "logging" along the Greenwater River above the 7020. He is felling a lot of Cottonwood Trees. It is nice to see beavers doing well in this area. They have always been a part of this ecosystem. We put up a game cam and got this picture of one in action:



Well, that is April, but it is a terrific picture, nonetheless. Beavers are amazing animals.

We hope to partner with Conservation NW in some areas this coming summer. One of the top projects, we hope anyway, is the one listed next. It is a huge danger to the entire forest as it is the most likely place for a fire to start and spread throughout the valley.

This spot needs attention, and we would like to help when equipment is available to fix it. Restoring it will take a significant multi-day effort.

FS RD 72 Remediation Area



Right around the corner from the 70 pit is this mess. Fires, hundreds of damaged, shot and shot-down trees, and trash. It is very bad and what shooters in this area do all the time. This area is a huge fire danger. There are literally tens of thousands of pieces of trash there now. It will be a huge project to try to clean up. Shooters rarely, if ever, clean up after themselves, as the law requires. We have tried posting signs there, but they are quickly destroyed. The entire forest East of Enumclaw should be shut down until behavior improves and reopens with a plan.

MIT Issue

After years of working with the Muckleshoot Indian Tribe, cleaning up trash on their lands, and keeping signs posted, the Tribe recently told us that its closure now includes everyone, including groups like ours. This seems like a mistake, but it is their land, so we will, unfortunately, have to cease work and assistance on their forest lands until and if a solution can be found. This is a sad development when cooperation seems the best for everyone. We continue to have a cooperative and mutually beneficial relationship with the Puyallup Tribe of Indians on their projects and fish/habitat restoration in the Greenwater River Basin.

7013 Area

There was no shooting and no additional damage. Closures work, and so do multiple signs. Our volunteers recently re-signed the area.

Cedar Springs & Old US Army Camp Site Concepts

Pending. Conservation NW has a plan for Cedar Spring we endorsed and sent a letter of support. We hope they will gain funding and be able to move forward on this significant project in the coming years! The plan by our volunteer, the late Marshall Rose, is excellent, and we hope it can move forward on the Old Army Camp area on Huckleberry Creek.

Volunteer Hours

Current Quarter volunteer hours for the WRFPA are: **196**

Total Hours for WRFPA since November 2018: **7,412**

Sign Inventory

We are short of brown signs.

Issues Moving Forward

- Discussion on the closure and decontamination of the 70-pit.
- Permanent closure of the 7013 and access road remediation – move the gate out to the very edge of the 70 road.